

PMDC GEARED MOTORS (WORM PLANETARY- WP70 & WP-115 TYPE)

ROTOMAG offers a range of WORM PLANETARY GEARED MOTORS with Permanent Magnet D.C. motors for high torque-low speed applications. Bronze Worm gear with profile ground worm forms the first stage and a planetary gear head is integrated as a subsequent stage.

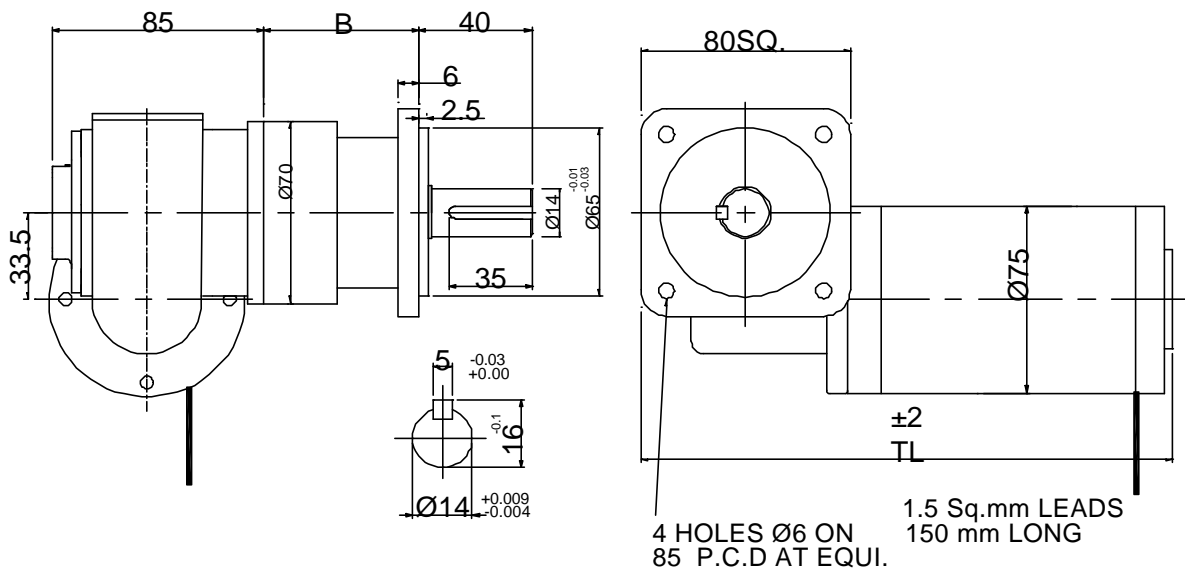
Planetary gear units feature ground gears, synthetic lubrication and lightweight aluminum housings. These geared motors have high instantaneous starting torque, are available in TENV construction and have a unique self-locking property.

Choice of foot and flange mountings, multiple stages and a range of gearing ratios make these ideal for hoists, stair lifts, door closers, linear actuators and other battery operated applications demanding high torque in compact size.



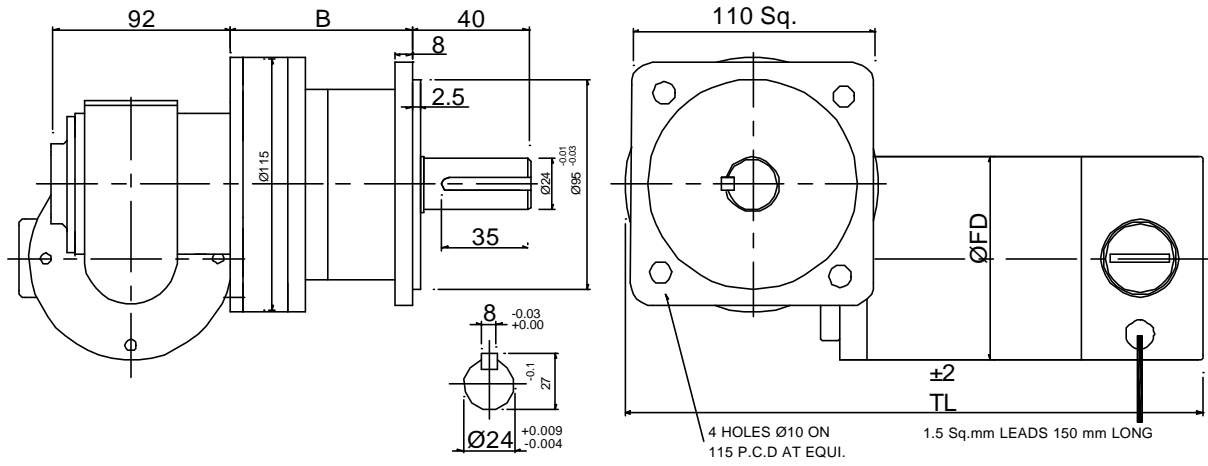
WP70-CT SERIES

FLANGE MOUNTING

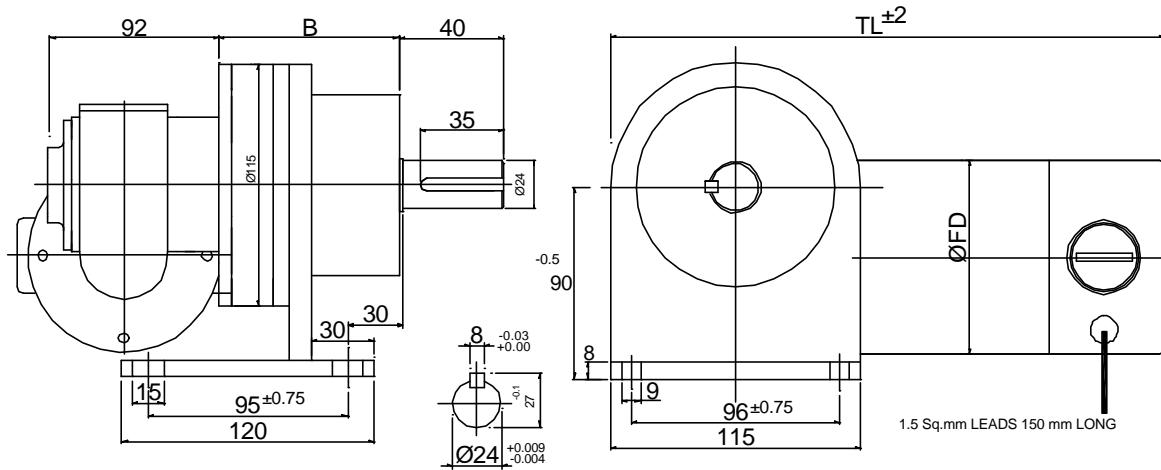


WP-115 S TYPE

FLANGE MOUNTING



FOOT MOUNTING



SPECIFICATIONS

H.P/ Watts	Model	Current (Amps) at		Motor Speed (RPM)	Ratio		Output Speed (RPM)		Torque (Nm)		Dimensions (mm)			Wt (Kgs)
		24 V	180 V		R1	R2	N1	N2	T1	T2	FD	B	TL	
SINGLE STAGE : WP115P-1S (WORM GEAR RATIO- 55:1)														
FRAME SIZE :WP 115-S1N-1S														
0.08/60	WP115S1N1S60	3.0	0.4	1000	3.54	4.5	5.1	4.0	40	50	89	85	250	9
0.10/75	WP115S1N1S75	4.0	0.5	1500	3.54	4.5	7.7	6.0	33	42	89	85	250	9
0.12/90	WP115S1N1S90	4.5	0.6	2000	3.54	4.5	10.2	8.0	30	38	89	85	250	9
FRAME SIZE :WP 115-S2N-1S														
0.12/90	WP115S2N1S90	4.5	0.6	1000	3.54	4.5	5.1	4.0	60	100	92	85	275	11
0.16/120	WP115S2N1S120	6.0	0.8	1500	3.54	4.5	7.7	6.0	53	67	92	85	275	11
0.2/150	WP115S2N1S150	8.0	1.0	2000	3.54	4.5	10.2	8.0	50	64	92	85	275	11
DOUBLE STAGE : WP115P-2S (WORM GEAR RATIO- 55:1)														
FRAME SIZE :WP 115-S1N-2S														
0.08/60	WP115S1N2S60	3.0	0.4	1000	12.5	20.2	1.4	0.9	145	235	89	105	250	11
0.10/75	WP115S1N2S75	4.0	0.5	1500	12.5	20.2	2.2	1.4	120	194	89	105	250	11
0.12/90	WP115S1N2S90	4.5	0.6	2000	12.5	20.2	2.9	1.8	110	178	89	105	250	11
FRAME SIZE :WP 115-S2N-2S														
0.12/90	WP115S2N2S90	4.5	0.6	1000	12.5	20.2	1.4	0.9	220	350	92	105	275	13
0.16/120	WP115S2N2S120	6.0	0.8	1500	12.5	20.2	2.2	1.4	192	310	92	105	275	13
0.2/150	WP115S2N2S150	8.0	1.0	2000	12.5	20.2	2.9	1.8	180	296	92	105	275	13

While ordering please specify Model No., Volts and Type
(Designs being continuously improved, please re- confirm specifications & dimensions prior to ordering)

All ROTOMAG motors consist of Ball Bearings with high temperature grease, Trickle / vacuum impregnation, Silver Bearing copper commutators, class B/F/H insulation, Dynamically balanced Rotors, Hot staked / Brazed/ TIG Welded commutator joints, Over sized Brushes and Superior Aesthetics

ROTOMAG MOTORS & CONTROLS PVT. LTD

7/C, Vitthal Udyognagar, Nr. Anand, Gujarat – 388121, INDIA

Ph: +91 – 2692 – 236005,236409. Fax: +91 – 2692 – 235209 .E – mail: sales@rotomag.com

www.rotomag.com